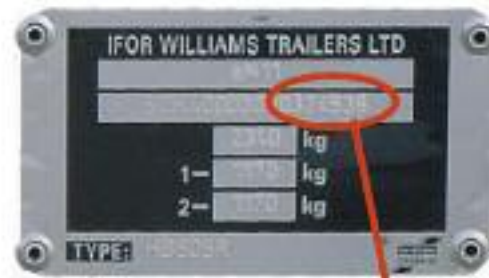


### PLEASE TELL US THE SERIAL NUMBER OF YOUR TRAILER

When ordering certain types of spare parts please supply us with the serial number of the trailer. This will identify the age and batch reference of the trailer, which will inform us of any changes to product specification around the date of manufacture. If you are ordering spares for more than one trailer, use the size / comments column of the order form to identify which serial number the parts are intended for.

### HOW TO FIND YOUR SERIAL NUMBER

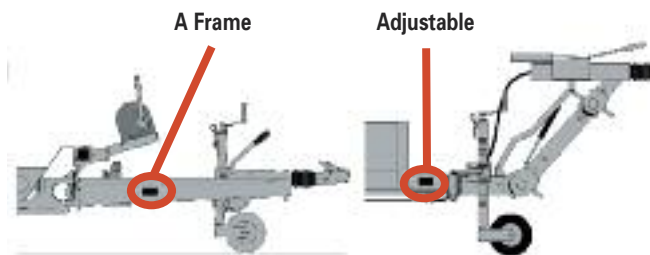
Every trailer we manufacture is fitted with a type plate, this will have a unique serial number printed on it by multi-dot punching. An example of a standard type plate is shown opposite. This example is printed with the full 17 digit VIN (Vehicle identification number). The last 6 or 7 digits represent the serial number depending on the age and model of your trailer (in this example 374538). Some models may be fitted with a slightly smaller plate, however the serial number will still be present and easily recognisable.



Trailer serial number      Last 6 digits

### BRAKED TRAILERS

For trailers with "A Frame" drawbars the plate is located on the outside of the right hand drawbar member. On trailers with adjustable height couplings the plate is located on the right hand section of the supporting structure that the drawbar / coupling unit is clamped to.



### UNBRAKED TRAILERS

On P5/6/7e (unbraked) models the plate is fitted to the front panel of the trailer, or is sometimes attached to the drawbar mounting bracket. On BV64e boxvan models the plate is fitted to the right hand side of the rear crossmember.

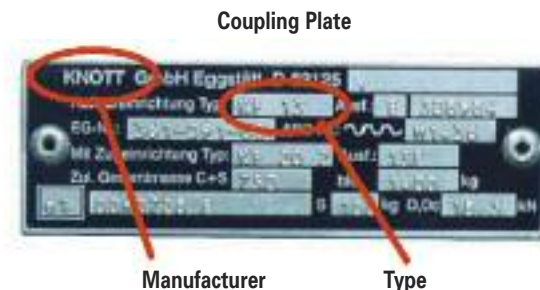


P5/6/7e

BV64e

### IDENTIFYING COUPLING TYPES

The coupling units fitted to your Ifor Williams trailer may be from one of several different manufacturers, when ordering spares for a coupling or brake linkage it is important to identify the manufacturer and model. Typically an overrun (brake control) coupling unit will be fitted with its own type plate, usually on the top or side of the main shaft housing. The example shown here is from a Knott KF13 overrun coupling.



Coupling Plate

Manufacturer

Type